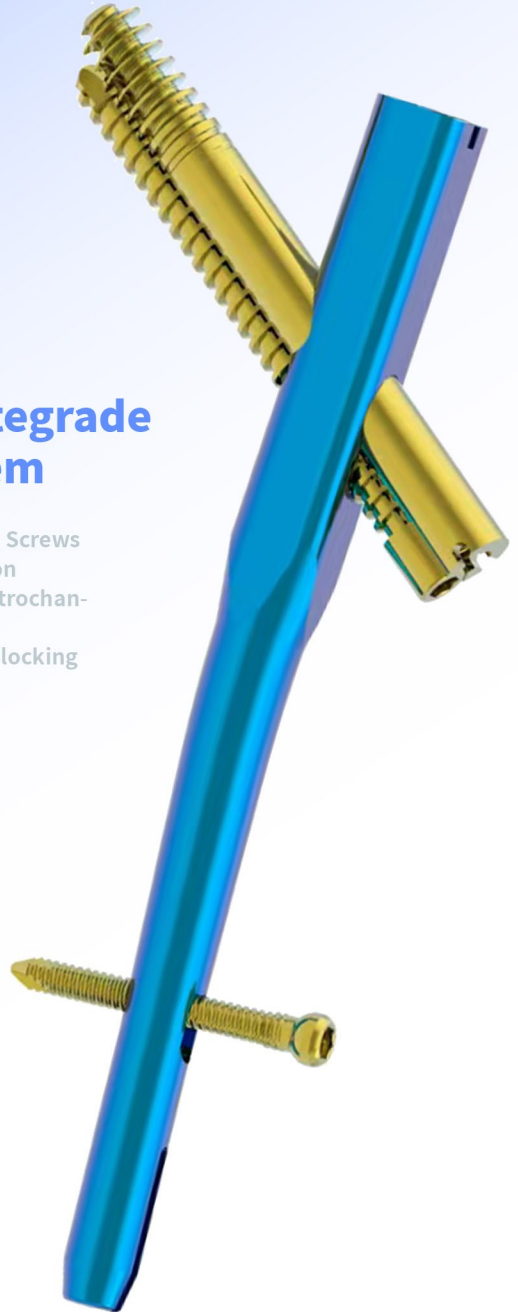


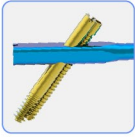
PITONS™

Proximal Femoral Inter-trochanteric Antegrade (INTERTAN) Nail System

- Integrated Interlocking Lag & Compression Screws for superior stability and linear compression
- The 5° lateral offset for minimally invasive trochanteric entry
- Distal locking slot allows static or dynamic locking

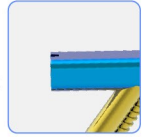


Features & Benefits

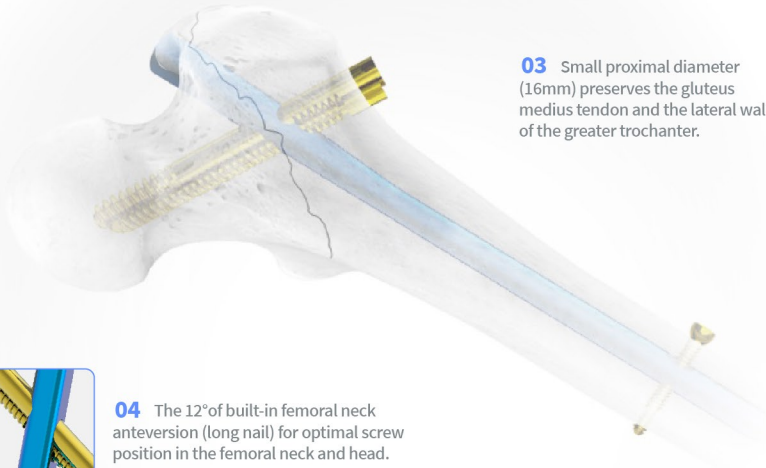
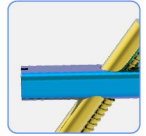


01 Integrated Interlocking Lag and Compression Screws for superior stability and linear compression.

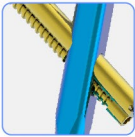
02 The 5° lateral offset for minimally invasive trochanteric entry.



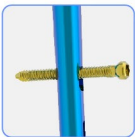
03 Small proximal diameter (16mm) preserves the gluteus medius tendon and the lateral wall of the greater trochanter.



04 The 12° of built-in femoral neck anteversion (long nail) for optimal screw position in the femoral neck and head.



05 Distal locking slot allows static or dynamic locking using 5.0mm Internal Hex Captured Locking Screws.



06 Clothespin distal tip reduces nail stiffness and the potential for periprosthetic fracture distal to the nail.



Indications

- Femur fractures
- Subtrochanteric fractures
- Intertrochanteric fractures
- Ipsilateral femoral shaft/neck fractures
- Intracapsular fractures
- Nonunions and malunions
- Polytrauma and multiple fractures
- Prophylactic nailing of impending pathologic fractures
- Reconstruction, following tumor resection and grafting
- Bone lengthening and shortening

Order Information



INTERTAN Nail, Long

Material: TC4

| P/N | SIZE | L/R |
|--------------|---------|-----|
| 030014930280 | Φ9×280 | L |
| 030014930300 | Φ9×300 | L |
| 030014930320 | Φ9×320 | L |
| 030014930340 | Φ9×340 | L |
| 030014930360 | Φ9×360 | L |
| 030014930380 | Φ9×380 | L |
| 030014930400 | Φ9×400 | L |
| 030014931280 | Φ9×280 | R |
| 030014931300 | Φ9×300 | R |
| 030014931320 | Φ9×320 | R |
| 030014931340 | Φ9×340 | R |
| 030014931360 | Φ9×360 | R |
| 030014931380 | Φ9×380 | R |
| 030014931400 | Φ9×400 | R |
| 030014940280 | Φ10×280 | L |
| 030014940300 | Φ10×300 | L |
| 030014940320 | Φ10×320 | L |
| 030014940340 | Φ10×340 | L |
| 030014940360 | Φ10×360 | L |
| 030014940380 | Φ10×380 | L |
| 030014940400 | Φ10×400 | L |
| 030014941280 | Φ10×280 | R |
| 030014941300 | Φ10×300 | R |
| 030014941320 | Φ10×320 | R |
| 030014941340 | Φ10×340 | R |
| 030014941360 | Φ10×360 | R |
| 030014941380 | Φ10×380 | R |
| 030014941400 | Φ10×400 | R |
| 030014950280 | Φ11×280 | L |
| 030014950300 | Φ11×300 | L |
| 030014950320 | Φ11×320 | L |
| 030014950340 | Φ11×340 | L |
| 030014950360 | Φ11×360 | L |
| 030014950380 | Φ11×380 | L |
| 030014950400 | Φ11×400 | L |
| 030014951280 | Φ11×280 | R |
| 030014951300 | Φ11×300 | R |
| 030014951320 | Φ11×320 | R |
| 030014951340 | Φ11×340 | R |
| 030014951360 | Φ11×360 | R |
| 030014951380 | Φ11×380 | R |
| 030014951400 | Φ11×400 | R |
| 030014970280 | Φ12×280 | L |
| 030014970300 | Φ12×300 | L |
| 030014970320 | Φ12×320 | L |
| 030014970340 | Φ12×340 | L |
| 030014970360 | Φ12×360 | L |
| 030014970380 | Φ12×380 | L |
| 030014970400 | Φ12×400 | L |
| 030014971280 | Φ12×280 | R |
| 030014971300 | Φ12×300 | R |
| 030014971320 | Φ12×320 | R |
| 030014971340 | Φ12×340 | R |
| 030014971360 | Φ12×360 | R |
| 030014971380 | Φ12×380 | R |



INTERTAN Nail Standard

Material: TC4

| P/N | SIZE |
|--------------|---------|
| 030014832200 | Φ9×200 |
| 030014832240 | Φ9×240 |
| 030014842200 | Φ10×200 |
| 030014842240 | Φ10×240 |
| 030014852200 | Φ11×200 |
| 030014852240 | Φ11×240 |
| 030014872200 | Φ12×200 |
| 030014872240 | Φ12×240 |
| 030014882200 | Φ13×200 |
| 030014882240 | Φ13×240 |



End Cap

Material: TC4

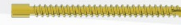
| P/N | SIZE |
|--------------|------|
| 030014000001 | — |



Anti-Rotation Subtrochanteric Lag Screw

Material: TC4

| P/N | SIZE |
|--------------|-------|
| 030014100070 | L=70 |
| 030014100075 | L=75 |
| 030014100080 | L=80 |
| 030014100085 | L=85 |
| 030014100090 | L=90 |
| 030014100095 | L=95 |
| 030014100100 | L=100 |
| 030014100105 | L=105 |
| 030014100110 | L=110 |
| 030014100115 | L=115 |
| 030014100120 | L=120 |



Recon Compression Locking Screw

Material: TC4

| P/N | SIZE |
|--------------|-------|
| 030014200070 | L=70 |
| 030014200075 | L=75 |
| 030014200080 | L=80 |
| 030014200085 | L=85 |
| 030014200090 | L=90 |
| 030014200095 | L=95 |
| 030014200100 | L=100 |
| 030014200105 | L=105 |
| 030014200110 | L=110 |
| 030014200115 | L=115 |
| 030014200120 | L=120 |



5.0mm Distal Locking Screw

Material: TC4

| P/N | SIZE |
|--------------|---------|
| 030014150030 | Φ5.0×30 |
| 030014150035 | Φ5.0×35 |
| 030014150040 | Φ5.0×40 |
| 030014150045 | Φ5.0×45 |
| 030014150050 | Φ5.0×50 |
| 030014150055 | Φ5.0×55 |
| 030014150060 | Φ5.0×60 |
| 030014150065 | Φ5.0×65 |
| 030014150070 | Φ5.0×70 |
| 030014150075 | Φ5.0×75 |
| 030014150080 | Φ5.0×80 |



Toolmed

Orthopaedic Business
Worldwide Headquarters

Changzhou Toolmed Medical Instrument Co.

No.23 Wangcai Road,
Konggang Industrial Park,
Luoxi Town, Xinbei District,
213000, Changzhou, Jiangsu,
P.R. of China

(0086) 519 83407182

Customer Service: (0086) 519 83407182

The product technique shown is for illustrative purposes only. The technique(s) actually employed in each case will always depend upon the medical judgment of the surgeon exercised before and during surgery as to the best mode of treatment for each patient.

Please see the package insert for the complete list of indications, warnings, precautions, and other important medical information.

Note: Manuals can be viewed using a current version of any major internet browser. For best results, use Adobe Acrobat Reader with the browser.

For more information visit
www.cztoolmed.com

© 2022 Toolmed. All rights reserved. Toolmed, Toolmed logo and Pitons are trademarks of Toolmed. All other brands are trademarks of a Toolmed company. EN PMV20220630-1.0/300