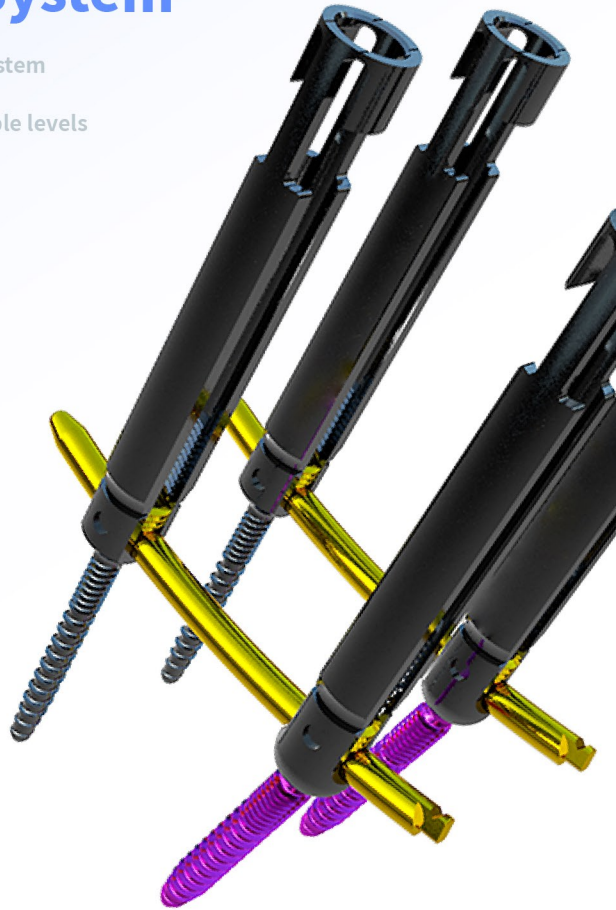




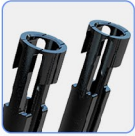
# EVEREST™

## 5.5 MIS Spine System

- True percutaneous screw and rod system
- Easy rod insertion
- Precise rod contouring allows multiple levels

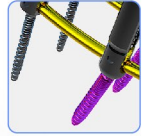


# Features & Benefits



**01** Percutaneous pedicle screw fixation. Small incision, less stripping of paraspinal muscles, minimal blood loss and rapid postoperative recovery

**02** Apply for multi-level constructs



**03** Simplified and unique rod placement techniques allow arbitrarily curved rod insertion



**04** Anatomically precontoured connecting rod, also allows additional rod bending

**05** Double-lead threaded and alternatively cement injectable cannulated pedicle screws ease screw insertion while adding stability, which is especially important for patients with osteoporosis



## Indications

- Disc degeneration disease
- Spondylolisthesis
- Stenosis
- Spinal fracture
- Spinal tumor
- Spinal deformity

# Order Information



**MIS Monoaxial Pedicle Screw**

Material: TC4



**MIS Polyaxial Pedicle Screw**

Material: TC4



**5.5mm Rod Straight**

Material: TC4



**5.5mm Rod Curved**

Material: TC4

P/N	SIZE
030013750025	5.0x25
030013750030	5.0x30
030013750035	5.0x35
030013750040	5.0x40
030013750045	5.0x45
030013750050	5.0x50
030013750055	5.0x55
030013750060	5.0x60
030013755025	5.5x25
030013755030	5.5x30
030013755035	5.5x35
030013755040	5.5x40
030013755045	5.5x45
030013755050	5.5x50
030013755055	5.5x55
030013755060	5.5x60
030013760025	6.0x25
030013760030	6.0x30
030013760035	6.0x35
030013760040	6.0x40
030013760045	6.0x45
030013760050	6.0x50
030013760055	6.0x55
030013760060	6.0x60
030013765025	6.5x25
030013765030	6.5x30
030013765035	6.5x35
030013765040	6.5x40
030013765045	6.5x45
030013765050	6.5x50
030013765055	6.5x55
030013765060	6.5x60
030013770025	7.0x25
030013770030	7.0x30
030013770035	7.0x35
030013770040	7.0x40
030013770045	7.0x45
030013770050	7.0x50
030013770055	7.0x55
030013770060	7.0x60

P/N	SIZE
030013850025	5.0x25
030013850030	5.0x30
030013850035	5.0x35
030013850040	5.0x40
030013850045	5.0x45
030013850050	5.0x50
030013850055	5.0x55
030013850060	5.0x60
030013855025	5.5x25
030013855030	5.5x30
030013855035	5.5x35
030013855040	5.5x40
030013855045	5.5x45
030013855050	5.5x50
030013855055	5.5x55
030013855060	5.5x60
030013860025	6.0x25
030013860030	6.0x30
030013860035	6.0x35
030013860040	6.0x40
030013860045	6.0x45
030013860050	6.0x50
030013860055	6.0x55
030013860060	6.0x60
030013865025	6.5x25
030013865030	6.5x30
030013865035	6.5x35
030013865040	6.5x40
030013865045	6.5x45
030013865050	6.5x50
030013865055	6.5x55
030013865060	6.5x60
030013870025	7.0x25
030013870030	7.0x30
030013870035	7.0x35
030013870040	7.0x40
030013870045	7.0x45
030013870050	7.0x50
030013870055	7.0x55
030013870060	7.0x60

P/N	SIZE
030013955030	5.5x30
030013955035	5.5x35
030013955040	5.5x40
030013955045	5.5x45
030013955050	5.5x50
030013955055	5.5x55
030013955060	5.5x60
030013955065	5.5x65
030013955070	5.5x70
030013955075	5.5x75
030013955080	5.5x80
030013955085	5.5x85
030013955090	5.5x90
030013955095	5.5x95
030013955100	5.5x100
030013955105	5.5x105
030013955110	5.5x110
030013955115	5.5x115
030013955120	5.5x120
030013955125	5.5x125
030013955130	5.5x130
030013955135	5.5x135
030013955140	5.5x140
030013955145	5.5x145
030013955150	5.5x150
030013955155	5.5x155
030013955160	5.5x160
030013955165	5.5x165
030013955170	5.5x170
030013955175	5.5x175
030013955180	5.5x180
030013955185	5.5x185
030013955190	5.5x190
030013955195	5.5x195
030013955200	5.5x200

P/N	SIZE
030013002025	5.5x25
030013002030	5.5x30
030013002035	5.5x35
030013002040	5.5x40
030013002045	5.5x45
030013002050	5.5x50
030013002055	5.5x55
030013002060	5.5x60
030013002065	5.5x65
030013002070	5.5x70
030013002075	5.5x75
030013002080	5.5x80
030013002085	5.5x85
030013002090	5.5x90
030013002100	5.5x100
030013002110	5.5x110
030013002120	5.5x120
030013002130	5.5x130
030013002140	5.5x140
030013002150	5.5x150



**Set Screw**

Material: TC4

P/N	SIZE
030013002	Ø8.8



**Toolmed**

Orthopaedic Business  
Worldwide Headquarters

**Changzhou Toolmed Medical Instrument Co.**

No.23 Wangcai Road,  
Konggang Industrial Park,  
Luoxi Town, Xinbei District,  
213000, Changzhou, Jiangsu,  
P.R. of China

(0086) 519 83407182

Customer Service: (0086) 519 83407182

The product technique shown is for illustrative purposes only. The technique(s) actually employed in each case will always depend upon the medical judgment of the surgeon exercised before and during surgery as to the best mode of treatment for each patient.

Please see the package insert for the complete list of indications, warnings, precautions, and other important medical information.

Note: Manuals can be viewed using a current version of any major internet browser. For best results, use Adobe Acrobat Reader with the browser.

For more information visit  
[www.cztoolmed.com](http://www.cztoolmed.com)

© 2022 Toolmed. All rights reserved. Toolmed, Toolmed logo and Everest are trademarks of Toolmed. All other brands are trademarks of a Toolmed company. EN PMV20220630-1.0/300